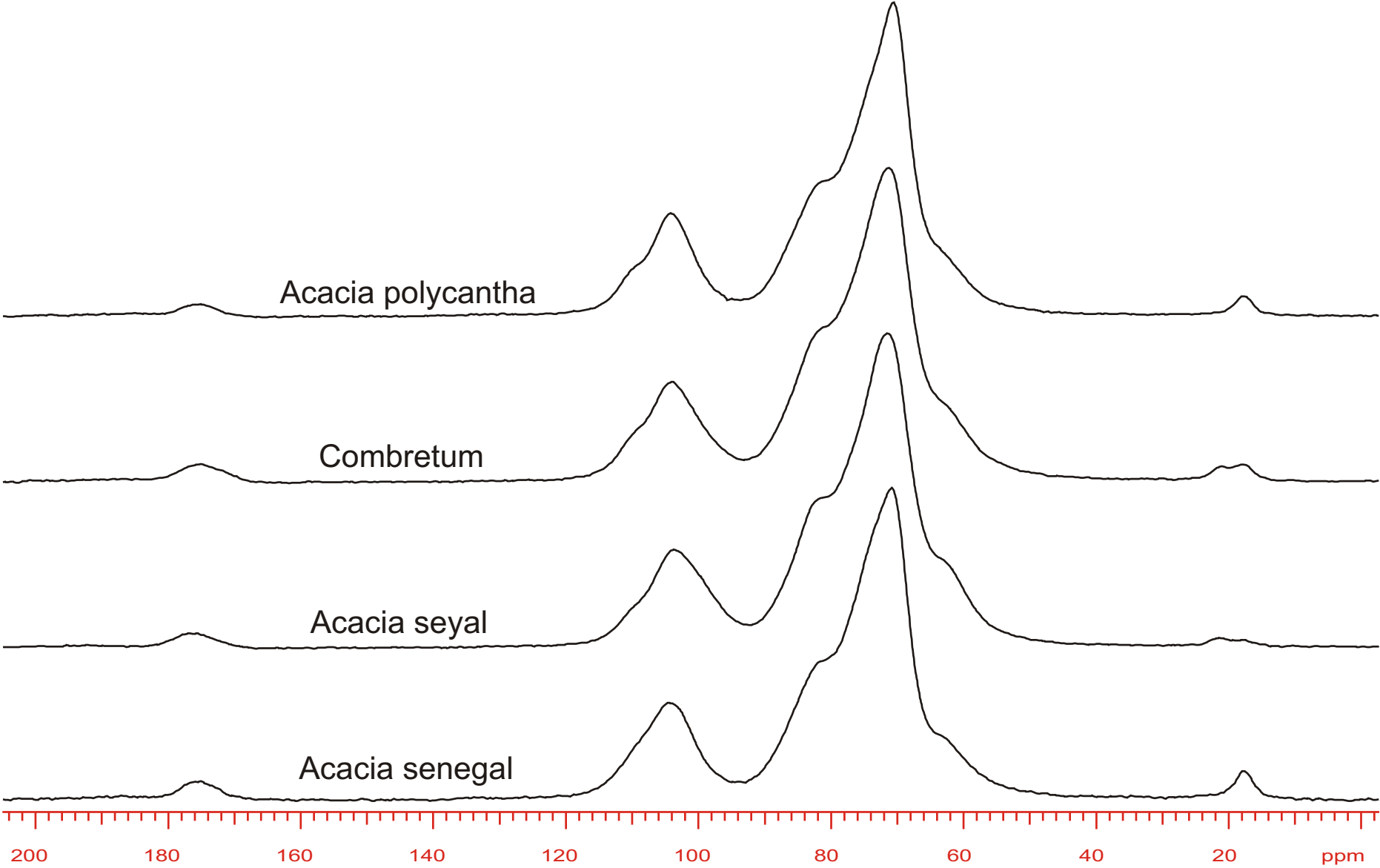


Solid-State ^{13}C CPMAS NMR



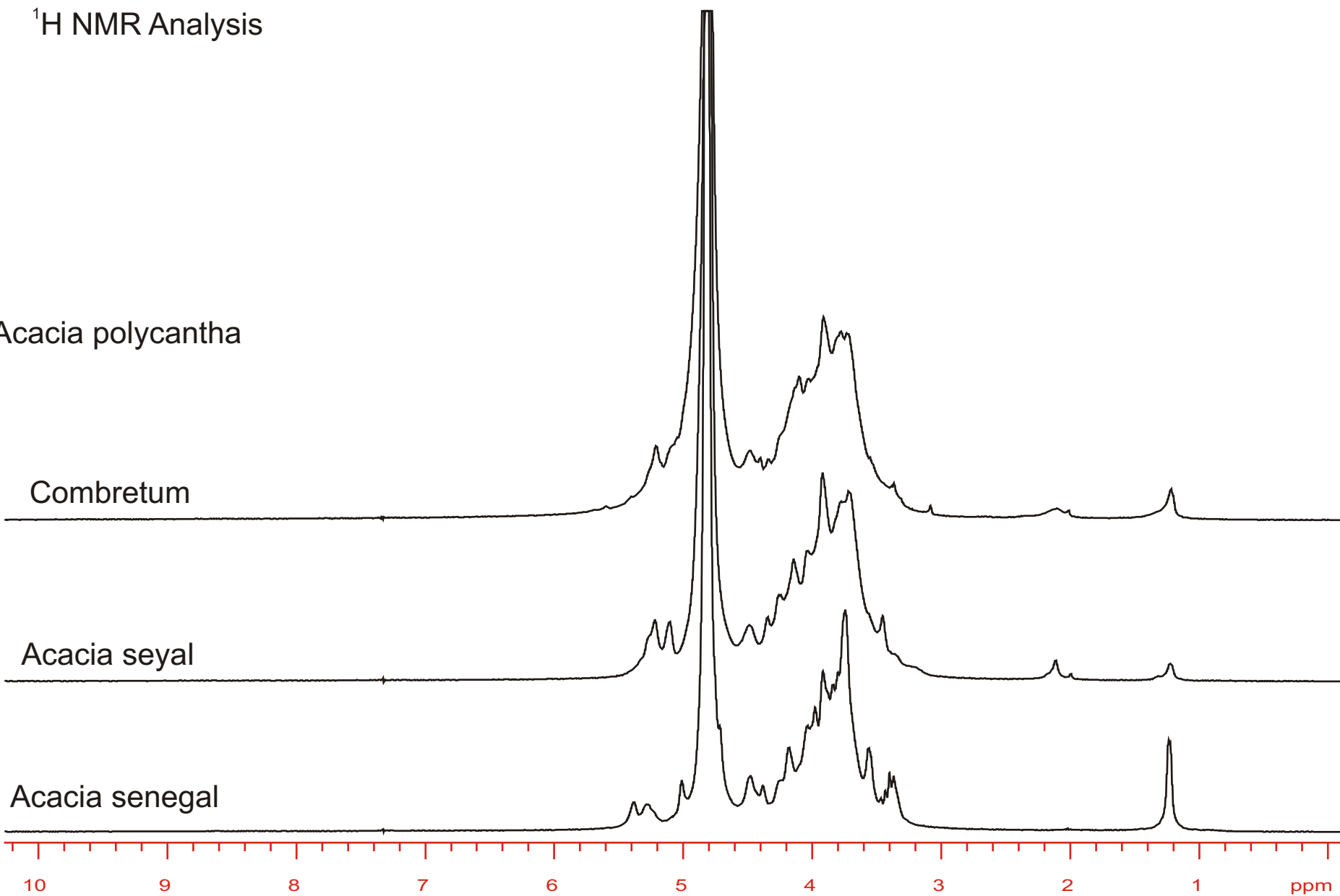
^1H NMR Analysis

Acacia polycantha

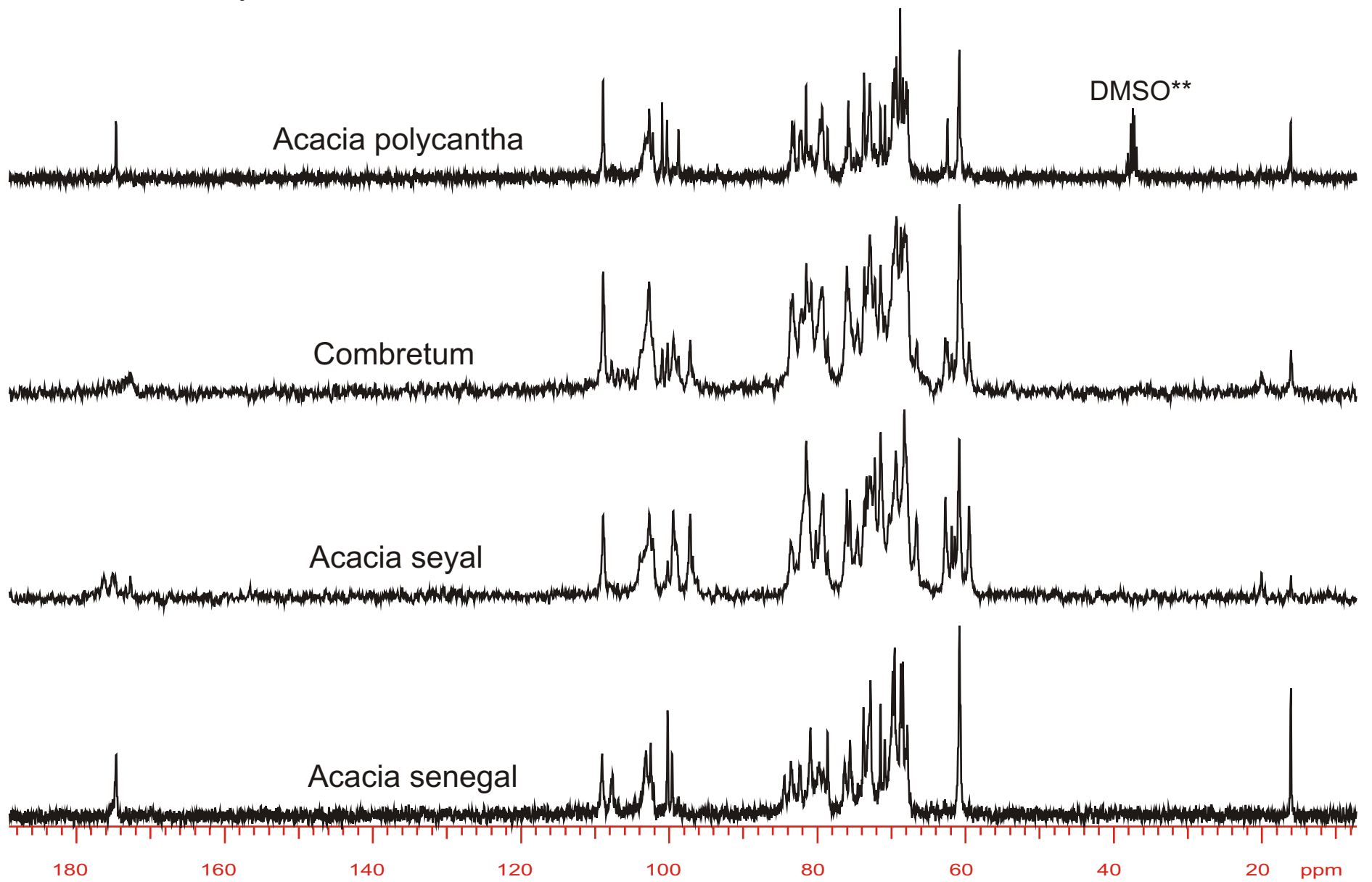
Combretum

Acacia seyal

Acacia senegal

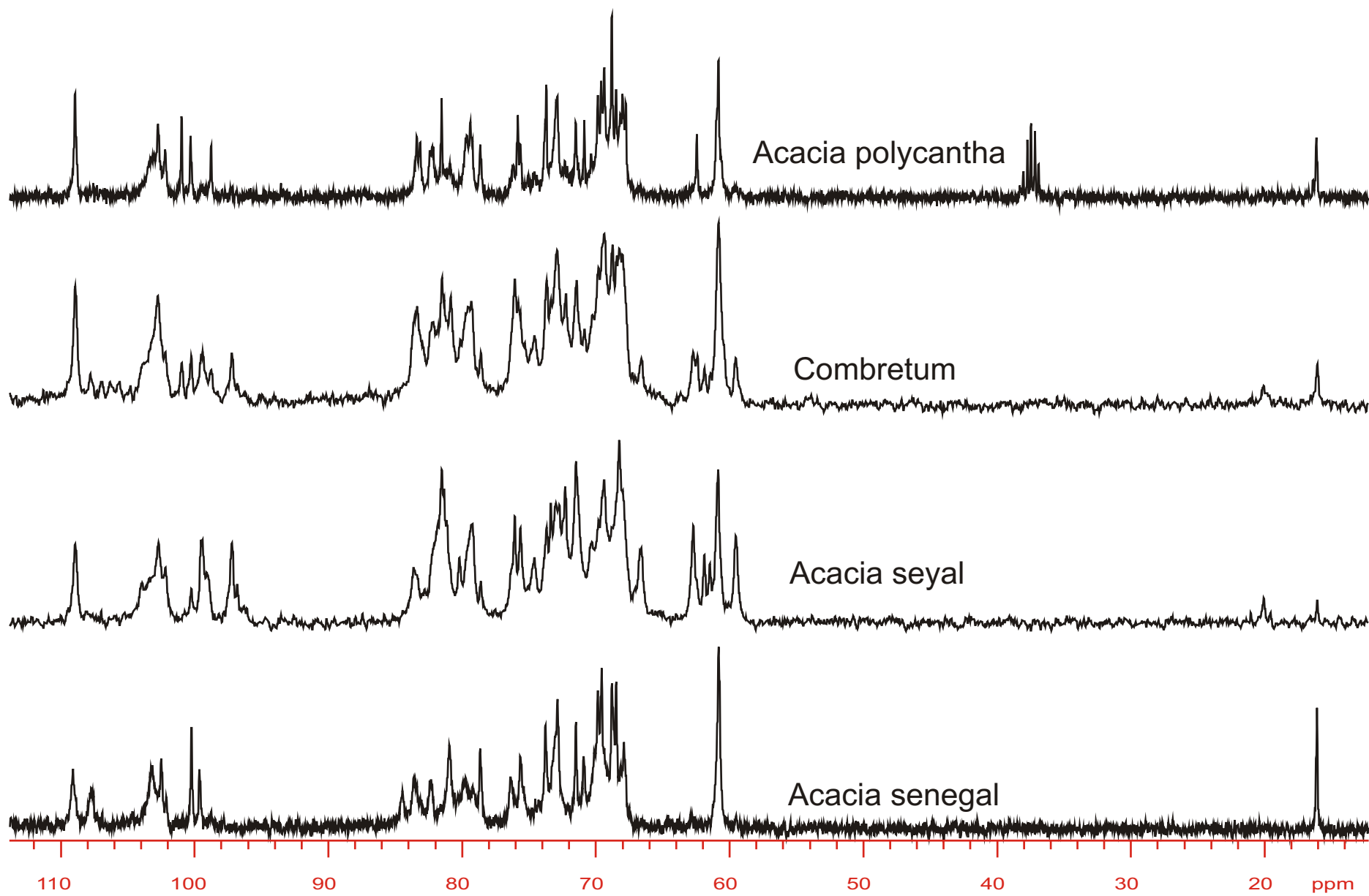


¹³C NMR Analysis



**Chemical Shift Probe

^{13}C NMR Expansion



^1H - ^{13}C DEPT-45 NMR - Protonated Carbons Only - Sensitivity Improvement Over Quantitative ^{13}C NMR

