

Hydrocarbonic Solvent - ^1H NMR Analysis

Alpha-H

H-Type Analysis

Total Aliphatic-H = 61.6

Total Aromatic-H = 38.3

Total Olefinic-H = 0.1

HeteroAromatic-H = 0.1

TriAromatic-H = 0.6

DiAromatic-H = 9.9

MonoAromatic-H = 27.7

Alpha-H = 47.8

CH₂ Alpha to 2 Aromatics = 4.5

Alpha CH₂ = 21.9

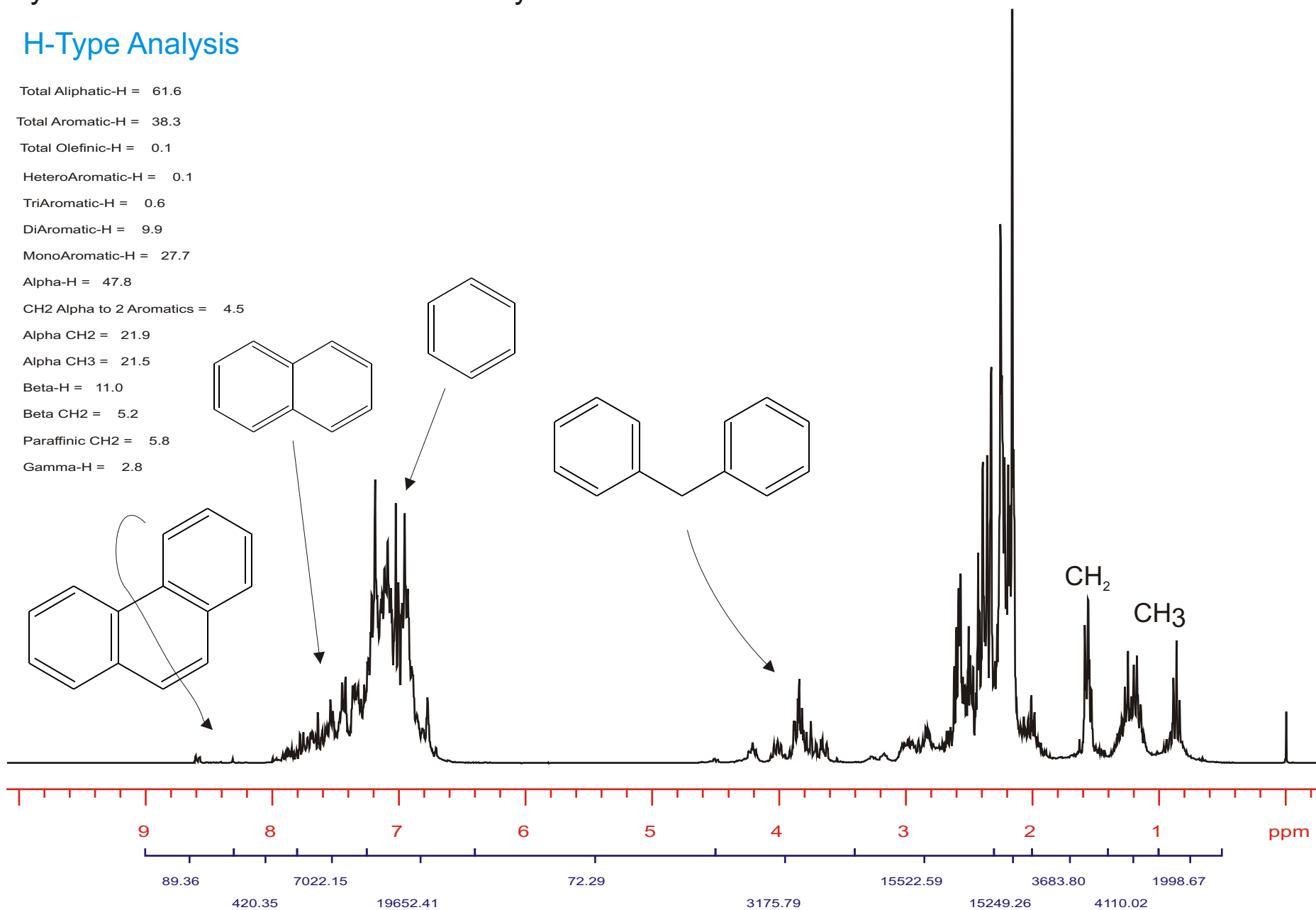
Alpha CH₃ = 21.5

Beta-H = 11.0

Beta CH₂ = 5.2

Paraffinic CH₂ = 5.8

Gamma-H = 2.8



Hydrocarbonic Solvent - ^{13}C NMR Analysis

Carbon Type Analysis

General Carbon Types

Aliphatic Carbon = 26.7

Aromatic Carbon = 73.3

Protonated Aromatic Carbon = 43.2

Alkyl Substituted Aromatic Carbon = 29.0

Methine Carbon = 4.6

Methylene Carbon = 5.8

Methyl Carbon = 16.2

Aromatic Carbon Breakdown

Heteroaromatic Carbon = 1.1

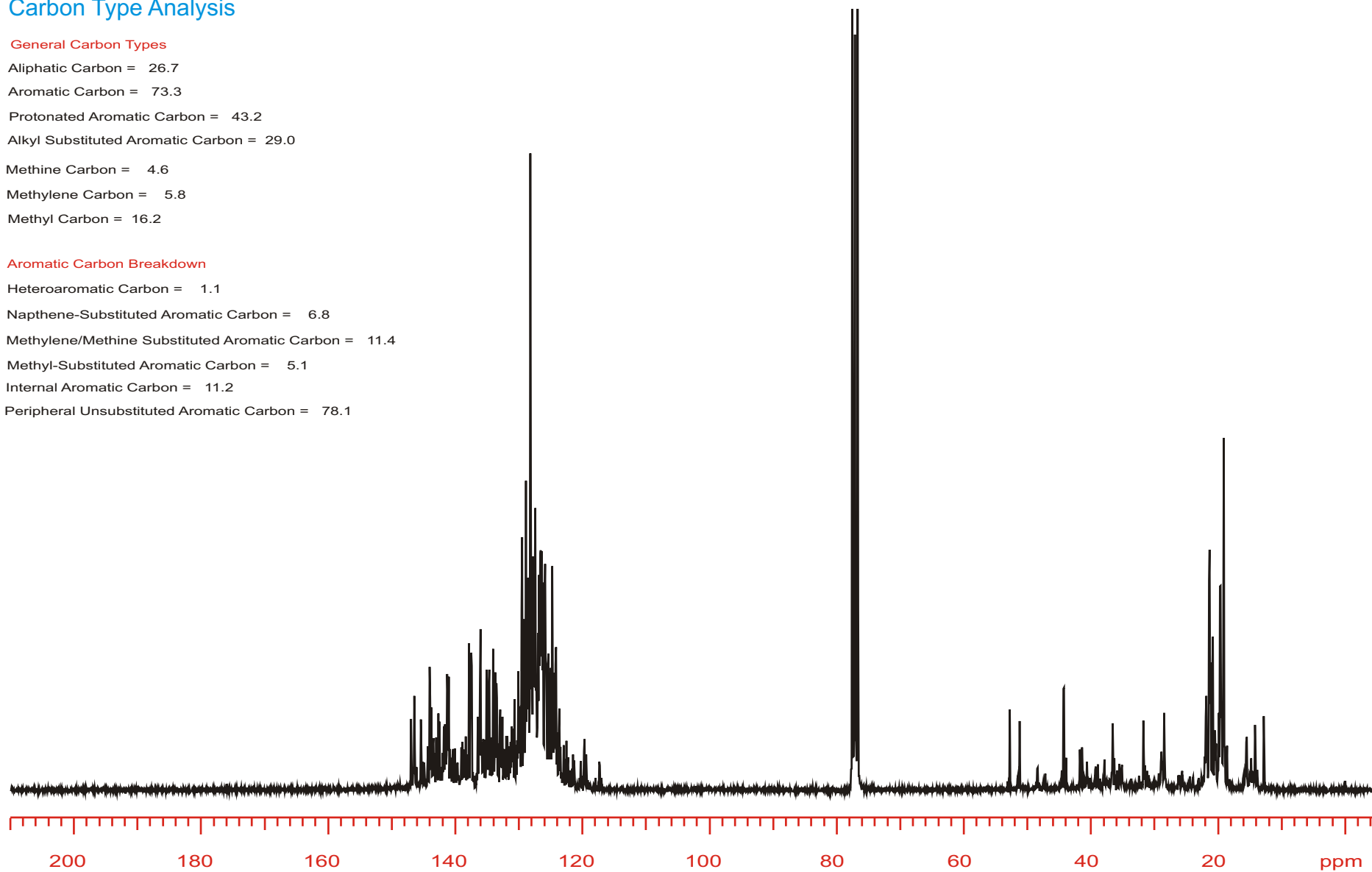
Napthene-Substituted Aromatic Carbon = 6.8

Methylene/Methine Substituted Aromatic Carbon = 11.4

Methyl-Substituted Aromatic Carbon = 5.1

Internal Aromatic Carbon = 11.2

Peripheral Unsubstituted Aromatic Carbon = 78.1



1H-13C DEPT in CDCl3-CrAcAc

JCE-PNA-U300

PULSE SEQUENCE dept

OBSERVE C13

FREQUENCY 75.427 MHz

SPECTRAL WIDTH 30030.0 Hz

ACQUISITION TIME 1.066 sec

RELAXATION DELAY 1.500 sec

PULSE WIDTH 16.0 usec

AMBIENT TEMPERATURE

NO. REPETITIONS 256

DECOUPLE H1

HIGH POWER 61

DECOUPLER GATED ON DURING ACQUISITION

DECOUPLER GATED OFF DURING DELAY

WALTZ16 MODULATED

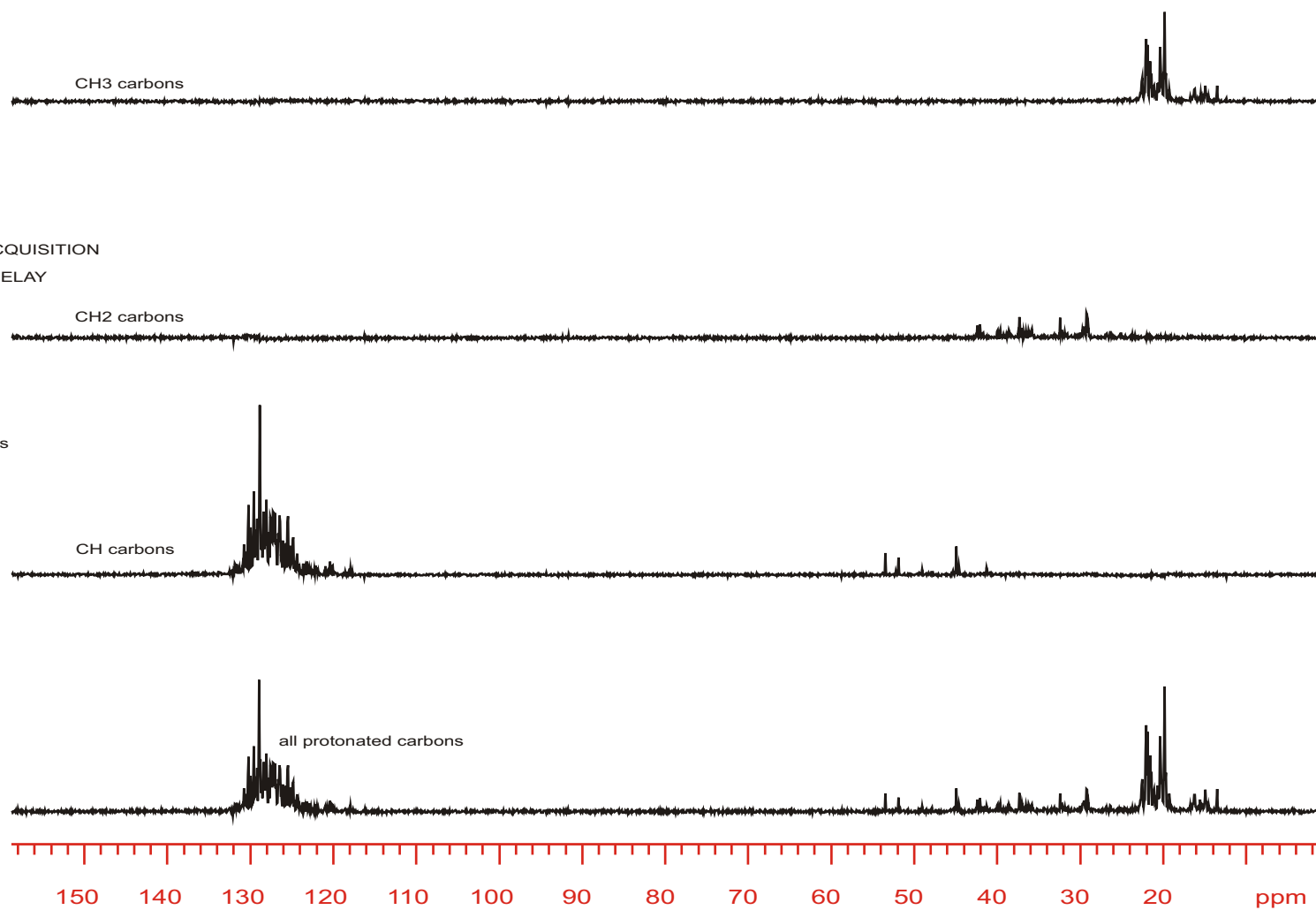
DOUBLE PRECISION ACQUISITION

DATA PROCESSING

LINE BROADENING 1.0 Hz

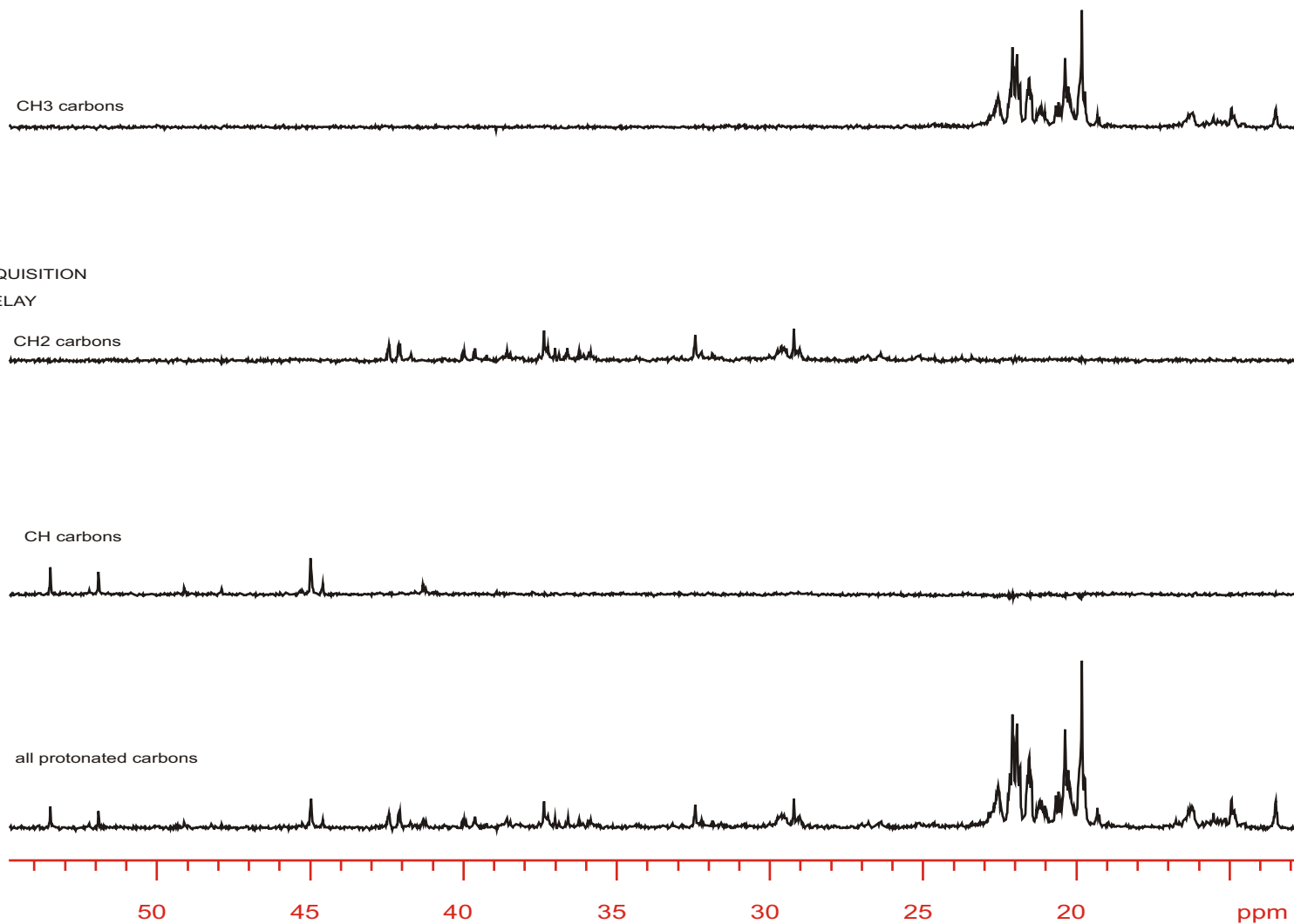
FT SIZE 131072

TOTAL ACQUISITION TIME 43 minutes



Aliphatic Region DEPT

1H-13C DEPT NMR
JCE-PNA-U300
PULSE SEQUENCE dept
OBSERVE C13
FREQUENCY 75.427 MHz
SPECTRAL WIDTH 30030.0 Hz
ACQUISITION TIME 1.066 sec
RELAXATION DELAY 1.500 sec
PULSE WIDTH 16.0 usec
AMBIENT TEMPERATURE
NO. REPETITIONS 256
DECOUPLE H1
HIGH POWER 61
DECOUPLER GATED ON DURING ACQUISITION
DECOUPLER GATED OFF DURING DELAY
WALTZ16 MODULATED
DOUBLE PRECISION ACQUISITION
DATA PROCESSING
LINE BROADENING 1.0 Hz
FT SIZE 131072
TOTAL ACQUISITION TIME 43 minutes



Aromatic Region - DEPT

