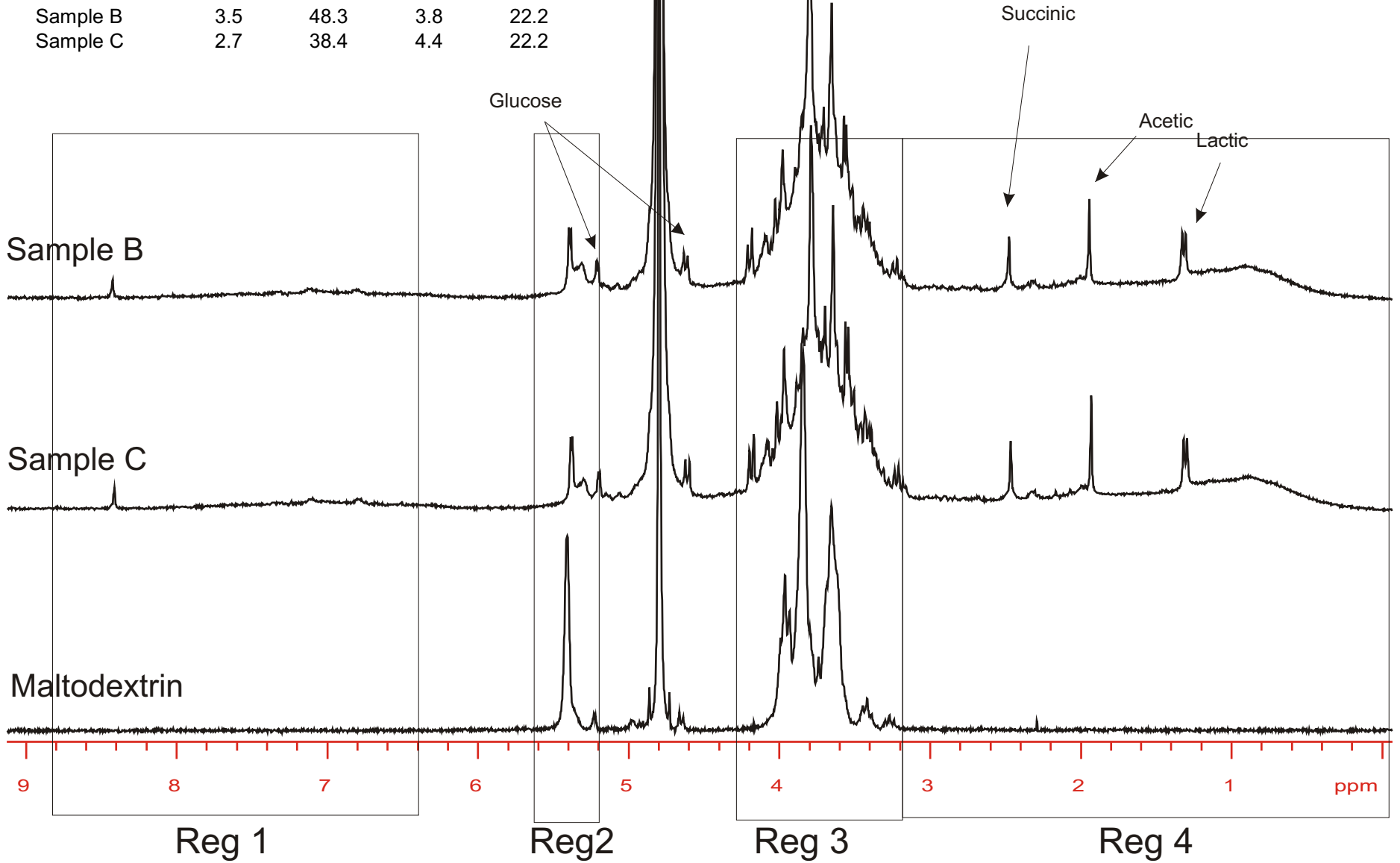


Liquid-State ^1H NMR

Normalized on Reg 4

Range (ppm)	5.6-5.2	4.3-3.2	8.8-6.4	3.2-0.0
^1H	Reg 1	Reg 2	Reg 3	Reg 4
Maltodextrin	8.6	58.1	0.0	0.0
Sample B	3.5	48.3	3.8	22.2
Sample C	2.7	38.4	4.4	22.2

H_2O



Liquid-State ^{13}C NMR

Normalize on Region 7

Range (ppm)	104-94	82-68	63-58	210-104	94-82	68-63	58-0
^{13}C	Reg 1	Reg 2	Reg 3	Reg 4	Reg 5	Reg 6	Reg 7
Sample B	8.68	33.36	8.49	33.15	5.76	3.19	23.28
Sample C	7.16	28.45	8.14	26.09	3.57	4.96	23.28

Reg=

4

1

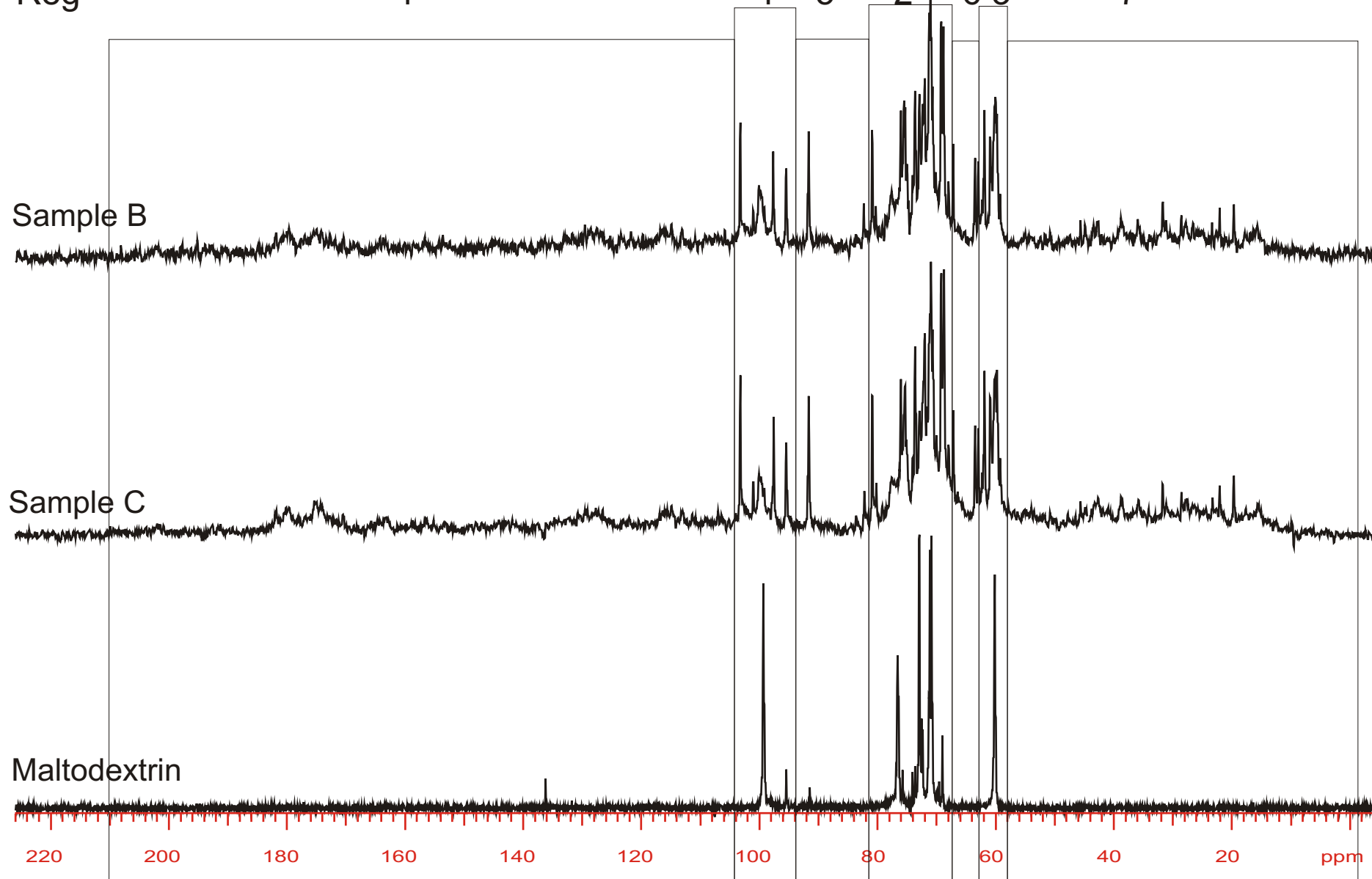
5

2

6

3

7



Solid-State ^{13}C NMR

Solids ^{13}C CPMAS Normalized to Reg 3

Range (ppm)	116-40	265-116	40 to -10
^{13}C	Reg 1	Reg 2	Reg 3
Sample B	77.46	18.74	17.46
Sample C	64.35	16.11	17.46

